

Lake Sabrina to Dingleberry Lake

By the Parchers Resort Crew

Sabrina Basin Trailhead
(About 8 miles roundtrip and 1500 ft. vertical)

From the Sabrina Basin trailhead, follow the trail around the south shore of Lake Sabrina. Take notice of the wildflowers and spectacular view of the Sierra crest. As the trail reaches the back of the lake, it ascends up a large draw. The lower portions of the trail are exposed to the sun so this is a good early morning hike. Take note of the waterfall above the back of Lake Sabrina.

Once the trail moves south, into the draw, the switchbacks begin. The trail from this point, all the way to Blue Lake consists of short sections of straight trail sandwiched between repetitive series of switchbacks. Much of these switchbacks are forested but those that are not provide an excellent vista looking back toward Lake Sabrina.

While this is a good uphill hump, the view is what will take your breath away. The scenery is spectacular. The trail winds up into the forest and flattens out as the trail approaches the lake.

Blue Lake is located at about 10,400 ft. and is very scenic. Follow the trail along Blue Lake. When it comes to a granite overlook, the trail turns away from the lake and then follows it again at a distance. About half way around Blue Lake there is a fork in the trail. Take the trail to the right.

The trail works its way along the end of a large ridge. The views east are spectacular. The path leads around the ridge to the Emerald Lakes. These are beautiful small ponds that are very photogenic and this may be as far as you want to go.

If you keep trekking, you will be led to the top of a granite ridge. The trail is poorly marked in this section but is easy to follow with a little sleuthing. The trail drops over the other side of the ridge to Dingleberry Lake. The best areas are at the outlet and above the inlet. Both will require a little off-trail hiking. A spectacular place is about 200 yards above the lake. The creek is wide and slow and the spot is begging to be photographed.

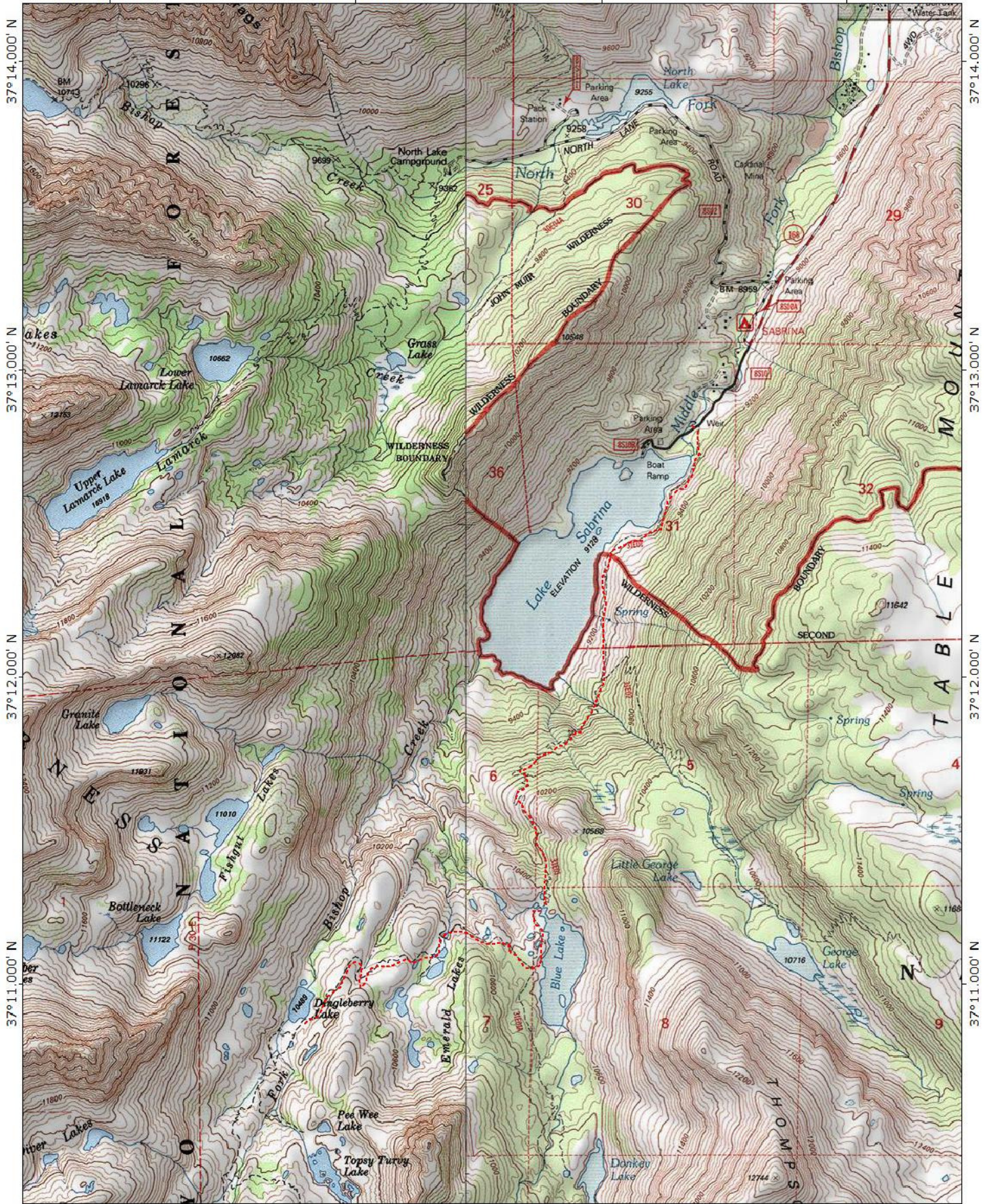


118°39.000' W

118°38.000' W

118°37.000' W

WGS84 118°36.000' W



118°39.000' W

118°38.000' W

118°37.000' W

WGS84 118°36.000' W

